

Dettagli di costruzione / Construction Details:		
N°	Nome / Part Name	Materiale / Material
1	Molla autobloccante Self block spring	AISI 304 Acciaio AISI 304 Stainless Steel
2	Corpo ad innesto rapido Quick coupling Body	Ottone / Brass - XX
3	Corpo / Body	Ottone / Brass - XX
4	Viola / Ferrule	Acciaio / Steel
5	Anello / Ring	Nylon 6
6	Dado / Nut	Ottone / Brass - XX

*Ottone è nichelato/ Brass is nickplated
XX - Acciaio INOX AISI 3016L / Stainless Steel AISI 316L

Ottone
Brass

EQ877

AISI 304
AISI 316L

CA02.05590

RIA

ELE063822CS

Settori di Impiego / Areas of application

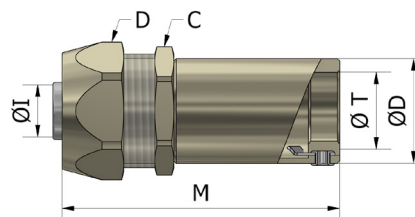
DESCRIZIONE / DESCRIPTION

Raccordo ad innesto rapido per il collegamento di un tubo rigido zincato TZR o inox TXR con un tubo flessibile. La molla autobloccante (1), consente l'innesto del corpo del raccordo (2) con una semplice pressione assicurando un'elevata resistenza alla trazione.

Quick-coupling fittings for the connection of a galvanized steel rigid pipes TZR or stainless steel pipes TXR with a flexible conduit. The self locking spring (1), allows the coupling of quick coupling body (2) with a simple pressure ensuring an high resistance to traction.

DATI TECNICI / TECHNICAL DATA

Norme di riferimento Reference standards	EN 61386-1, EN 61386-21 IEC 61386-1, IEC 61386-21
Grado di Protezione IP Rating	IP66 / IP67
Temperatura di servizio Service temperature	- 40 °C / +105°C
Resistenza alla corrosione Resistance to corrosion	UNI ISO 9227 DIN 50017SK



Codice Code	Ø Tubo Ø Pipe	Ø Int. Guaina Ø Int. Conduit	Ø Passaggio utile Ø Cable passage	D	C	M	Ø D	Confezione Package
Ottone/Brass	Ø T (mm)	Ø I (mm)	mm	mm	mm	mm	mm	N° pz.
58016	16,0	12,0	10,5	26,0	24,0	58,0	22,0	25
58216	16,0	15,5	14,0	29,0	27,0	58,0	22,0	25
58020	20,0	15,5	14,0	29,0	27,0	58,0	26,0	25
58220	20,0	20,5	19,0	35,0	33,0	58,0	26,0	25
58225	25,0	15,5	19,0	29,0	27,0	58,0	32,0	25
58025	25,0	20,5	19,0	35,0	33,0	58,0	32,0	10
58325	25,0	26,5	24,5	45,0	43,0	65,0	32,0	10
58032	32,0	26,5	24,5	45,0	43,0	65,0	39,0	10
58232	32,0	34,5	32,5	54,0	52,0	70,0	39,0	5
58340	40,0	26,5	24,5	45,0	43,0	65,0	32,0	5
58040	40,0	34,5	32,5	54,0	52,0	70,0	47,0	5
58240	40,0	39,5	37,5	62,0	60,0	75,0	47,0	5
58050	50,0	39,5	37,5	62,0	60,0	75,0	57,0	5
58250	50,0	50,5	48,5	80,0	75,0	75,0	57,0	4
58063	63,0	50,5	48,5	80,0	75,0	82,0	70,0	-

Codice Code	Ø Tubo Ø Pipe	Ø Int. Guaina Ø Int. Conduit	Ø Passaggio utile Ø Cable passage	D	C	M	Ø D
AISI 316L	Ø T (mm)	Ø I (mm)	mm	mm	mm	mm	mm
58020XX*	20,0	15,5	14,0	29,0	27,0	58,0	26,0
58025XX*	25,0	20,5	19,0	35,0	33,0	58,0	32,0
58032XX*	32,0	26,5	24,5	45,0	43,0	65,0	39,0
58040XX*	40,0	34,5	32,5	54,0	52,0	70,0	47,0
58050XX*	50,0	39,5	37,5	62,0	60,0	75,0	57,0

* Consegna in 20 giorni lavorativi su quantità minima / Delivery in 20 working days on minimum quantity

