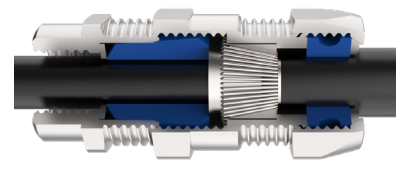
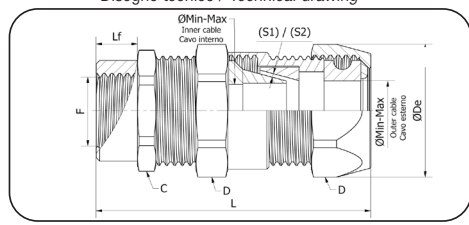


PF-DA

Pressacavo doppia tenuta per cavo armato con filetto femmina fisso
 Double tightening cable gland for armoured cable with fixed female thread



Disegno tecnico / Technical drawing



Settori di Impiego / Areas of application



Pressacavo tipo / Cable glands type

SIZE ID	Filetto cilindrico / Cylindrical thread					Spessore cavo range (mm)		L (mm)	øDe (mm)	Esagono Hexagon		Rif. Ref.	Cavo interno (Gommino di tenuta) Inner cable (Sealing rubber)	Cavo estremo (Gommino di entrata) Outer cable (Entry rubber)	Conf. Pack.	
	Codice Code	Filetto Thread Gas ISO 228	Codice Code	Filetto Thread Metrico ISO 965-1	Lf mm filetto Thread	S1	S2			C	D		ø min-max	ø min-max		
		F		F	GAS ISO 228 ISO 965-1											N° Pz
A2	Ex46641	GAS 3/8"	Ex46601	M16x1,5	10,0	0	0,8	60	29	24	26	AW	5,0 - 7,0	8,0 - 10,5	5	
						-	-						BY	7,0 - 9,0		10,5 - 13,0
						-	-						CZ	9,5 - 11,5		10,5 - 13,0
A3	Ex46642	GAS 1/2"	Ex46602	M20x1,5	10,0	0	0,8	62	32,5	27	29	AW	5,5 - 8,0	9,0 - 12,0	5	
						-	-						BY	8,0 - 10,5		12,0 - 15,0
						-	-						CZ	10,5 - 13,0		15,0 - 18,0
A4	Ex46643	GAS 3/4"	Ex46603	M25x1,5	10,0	0	0,8	62	38,5	33	35	AW	10,5 - 13,0	15,0 - 18,0	3	
						-	-						BY	13,0 - 15,5		18,0 - 21,0
						-	-						CZ	15,5 - 18,0		21,0 - 24,0
A5	Ex46644	GAS 1"	Ex46604	M32x1,5	12,0	0	0,8	81	49,5	43	45	AW	15,5 - 18,0	21,0 - 24,5	3	
						-	-						BY	18,0 - 20,5		24,5 - 28,0
						-	-						CZ	20,5 - 23,0		28,0 - 31,5
A6	Ex46645	GAS 1" 1/4	Ex46605	M40x1,5	12,0	0	0,8	85	60	52	54	AW	21,0 - 24,0	30,0 - 34,0	1	
						-1,25	-2,5						BY	24,0 - 27,0		30,0 - 34,0
						-	-						CZ	27,0 - 30,0		34,0 - 38,0
A7	Ex46646	GAS 1" 1/2	Ex46606	M50x1,5	14,0	0	0,8	98	69	60	62	AW	24,0 - 27,0	30,0 - 34,0	1	
						-1,25	-2,5						BY	27,0 - 30,0		34,0 - 38,0
						-	-						CZ	30,0 - 33,0		38,0 - 42,0
A8	Ex46647	GAS 2"	Ex46607	M63x1,5	14,0	0	0,8	108	89	75	80	AW	27,0 - 30,0	33,0 - 37,0	1	
						-1,25	-2,5						BY	30,0 - 33,0		37,0 - 41,0
						-	-						CZ	33,0 - 36,0		41,0 - 45,0

Maximum length of cable gland (L) is assembled with S1 or S2 male cone with maximum armoured thickness
 La lunghezza massima del pressacavo (L) è assemblato con cono maschio S1 o S2 con spessore massimo dell'armatura

Tipo di certificazioni Certification type	Organismo di notifica Notification body	Gruppo di dispositivi Device Group	ATEX Categorie ATEX Category	Esecuzioni Execution	EPL	Grado IP IP Rating	Norme di riferimento Reference norms	Tipo di cavo Cable type	EMC Compatibilità compatibility	Zone Zona	Disponibile ingresso filetto Available thread entry	Temperatura di esercizio Operating temperature
IECEx	-	-	-	Ex eb IIC	Gb	IP66 / IP67	IEC 60079-0, IEC 60079-7, IEC 60079-15, IEC 60079-31	Armato Armoured	Sì YES	1 zone 2 zone 21 zone 22 zone	ISO 965-1, GAS ISO 228	-35°C +85°C
				Ex nR IIC	Gc	IP68 (0.5bar, 30 min)						
				Ex tb IIIC	Db	IP 6X 20 mbar						
Ex	0051	II	2G	Ex eb IIC	Gb	IP66 / IP67	EN IEC 60079-0, EN IEC 60079-7, EN IEC 60079-15, EN IEC 60079-31	Armato Armoured	Sì YES	1 zone 2 zone 21 zone 22 zone	ISO 965-1, GAS ISO 228	-35°C +85°C
				Ex nR IIC	Gc	IP68 (0.5bar, 30 min)						
				Ex tb IIIC	Db	IP 6X 20 mbar						

Esempio di marcatura pressacavo Ex / Example of Ex cable gland marking

IECEx IMQ 24.0004X IMQ 24 ATEX 012 X (eb,tb) IMQ 24 ATEX 013 X (nR) PF-DA A2 - Ex46601AW M16x1.5
 CE Ex 0051 II 2GD Ex eb IIC Gb Ex tb IIIC Db | II 3G Ex nR IIC Gc -35/+85 °C IP66/68



Ex Apparecchiatura

Ex Equipment

scarica le istruzioni di montaggio
download assembly instructions

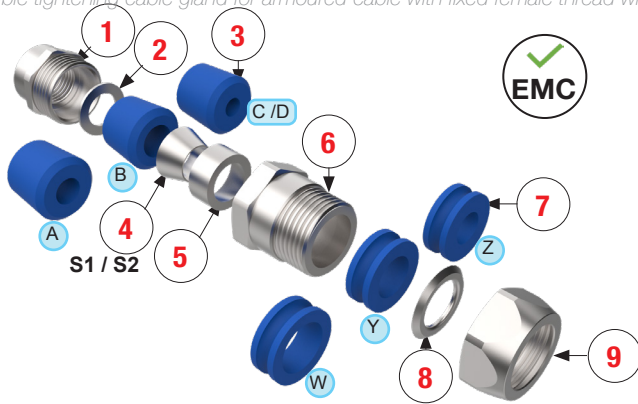


Dettagli di costruzione / Construction Details:

N°	Nome / Part Name	Materiale / Material
1	Corpo / Body	Ottone nichelato / Brass nickel plated
2	Rondella di uscita / End washer	Ottone nichelato / Brass nickel plated
3	Gommino di tenuta / Sealing rubber	EPDM
4	Cono maschio / Male cone	Ottone nichelato / Brass nickel plated
5	Cono femmina / female cone	Ottone nichelato / Brass nickel plated

N°	Nome / Part Name	Materiale / Material
6	Corpo centrale / Central body	Ottone nichelato / Brass nickel plated
7	Gommino di entrata / Entry rubber	EPDM
8	Anello antifrizione / Anti-friction ring	Ottone nichelato / Brass nickel plated
9	Dado / Nut	Ottone nichelato / Brass nickel plated

Pressacavo doppia tenuta per cavo armato con filetto femmina fisso con KIT
Double tightening cable gland for armoured cable with fixed female thread with KIT



ESEMPIO D'ORDINE / EXAMPLE ORDERING

Codice d'ordinazione
Ordering code

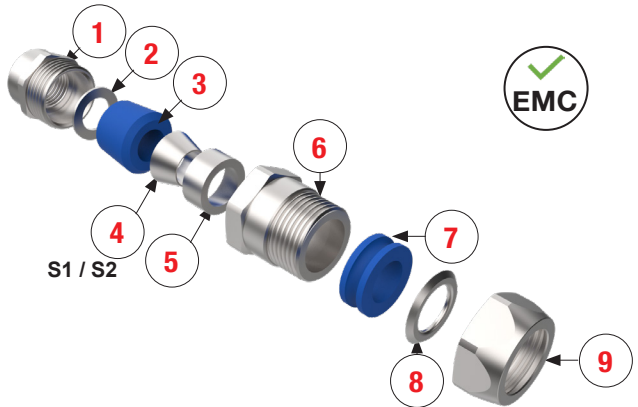
Ex46601 **Ex46601**

Product code
Codice prodotto

= Kit inclusive all range of rubbers and male cones (S1 and S2)
Kit comprensivo di tutta la gamma di gommini e coni maschi (S1 e S2)

Note: KIT doesn't have ref. letter at the end of the code.
Nota: il KIT non ha rif. lettera alla fine del codice.

Pressacavo doppia tenuta per cavo armato con filetto femmina fisso con una gommino di ingresso e una gommino di tenuta
Double tightening cable gland for armoured cable with fixed female thread with one entry rubber and one sealing rubber



ESEMPIO D'ORDINE / EXAMPLE ORDERING

Codice d'ordinazione
Ordering code

Ex46601 **AW** **Ex46601AW**

Product code
Codice prodotto

AW/BY/CY* = One entry rubber and one sealing rubber inclusive male cones (S1 and S2)
Una gommino di ingresso e una gommino di tenuta comprensivo coni maschi (S1 e S2)

* Note: For each code check the column ref. indicate the letter.
Nota: Per ogni codice verificare la colonna rif. indicare la lettera.

Gommino di tenuta / Sealing rubber								Gommino di entrata / Entry rubber										
SIZE ID	Codice Code	Cavi Cables		Conf. Pack. N° Pz	SIZE ID	Codice Code	Cavi Cables		Conf. Pack. N° Pz	SIZE ID	Codice Code	Cavo estremo Outer cable		Conf. Pack. N° Pz				
		ø Min	Max				ø Min	Max				ø Min	Max					
A2	Ex34202	A	5,0 - 7,0	10	A6	Ex34306	A	21,0 - 24,0	5	A2	36001	W	8,0 - 10,5	10	A6	36006	W	30,0 - 34,0
	Ex34102	B	7,0 - 9,0			Ex34106	B	24,0 - 27,0			36101	Y	10,5 - 13,0			36106	Y	34,0 - 38,0
	Ex34002	C	9,5 - 11,5			Ex34206	C	27,0 - 30,0			-	-	-			36206	Z	38,0 - 42,0
	-	-	-			Ex34006	D	30,0 - 33,0			36102	W	9,0 - 12,0			36007	W	33,0 - 37,0
A3	Ex34203	A	5,5 - 8,0	10	A7	Ex34207	A	27,0 - 30,0	5	A3	36003	Y	12,0 - 15,0	10	A7	36107	Y	37,0 - 41,0
	Ex34103	B	8,0 - 10,5			Ex34107	B	30,0 - 33,0			36103	Z	15,0 - 18,0			36207	Z	41,0 - 45,0
	Ex34003	C	10,5 - 13,0			Ex34007	C	33,0 - 36,0			36204	W	15,0 - 18,0			36008	W	42,0 - 46,0
	Ex34204	A	10,5 - 13,0			Ex34208	A	36,0 - 39,0			36004	Y	18,0 - 21,0			36108	Y	46,0 - 50,0
A4	Ex34104	B	13,0 - 15,5	8	A8	Ex34108	B	39,0 - 42,0	5	A4	36104	Z	21,0 - 24,0	8	A8	36208	Z	50,0 - 54,0
	Ex34004	C	15,5 - 18,0			Ex34308	C	42,0 - 45,0			36005	W	21,0 - 24,5					
	Ex34205	A	15,5 - 18,0			-	-	-			36105	Y	24,5 - 28,0					
A5	Ex34105	B	18,0 - 20,5	8	-	-	-	-	-	A5	36205	Z	28,0 - 31,5	-	-	-	-	
	Ex34005	C	20,5 - 23,0															