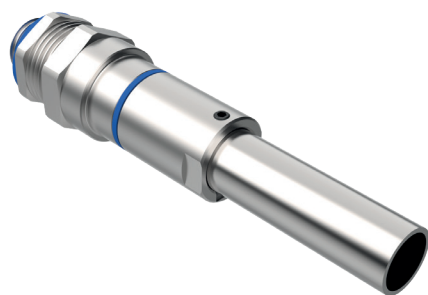
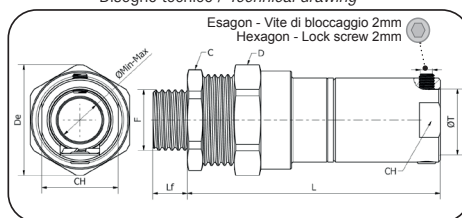


INR TPM-N

Raccordo innesto rapido pressacavo per tubo rigido maschio fisso per cavo non armato
Quick coupling cable gland for non-armoured cable with fixed male thread for rigid pipe



Disegno tecnico / Technical drawing



Settori di Impiego / Areas of application



SIZE ID	Filetto conico / Taper thread					Filetto cilindrico / Cylindrical thread					L mm	øDe mm	Tubo Tube (mm)	Esagono Hexagon (mm)		Chiave parallela Parallel Key (mm)	Gommino di tenuta Sealing rubber	Cavi Cables	Conf. Pack.			
	Codice Code	Filetto Thread NPT	Codice Code	Filetto Thread ISO 7/1	Lf (mm) filetto Thread NPT ISO 7/1	Codice Code	Filetto Thread GAS ISO 228	Codice Code	Filetto Thread Metrico ISO 965-1	Lf (mm) filetto Thread GAS ISO 228 ISO 965-1				C	D					CH (mm)	ø Min-Max	N° Pz
A2	Ex59421	NPT 3/8	Ex59321	R 3/8"	11,5	Ex59441	GAS 3/8"	Ex59342	M16x1,5	9,0	67	29	16,0	24	26	20	A	5,0 - 7,0				
																	B	7,0 - 9,0	5			
																	C	9,5 - 11,5				
A3	Ex59422	NPT 1/2	Ex59322	R 1/2"	15,0	Ex59442	GAS 1/2"	Ex59343	M20x1,5	9,0	68	32,5	20,0	27	29	24	A	5,5 - 8,0				
																	B	8,0 - 10,5	5			
																	C	10,5 - 13,0				
A4	Ex59423	NPT 3/4	Ex59323	R 3/4"	15,0	Ex59443	GAS 3/4"	Ex59344	M25x1,5	9,0	68	38,5	25,0	33	35	30	A	10,5 - 13,0				
																	B	13,0 - 15,5	3			
																	C	15,5 - 18,0				
A5	Ex59424	NPT 1"	Ex59324	R 1"	19,0	Ex59444	GAS 1"	Ex59345	M32x1,5	11,0	75	49,5	32,0	42	45	37	A	15,5 - 18,0				
																	B	18,0 - 20,5	3			
																	C	20,5 - 23,0				
A6	Ex59425	NPT 1" 1/4	Ex59325	R 1" 1/4	21,0	Ex59445	GAS 1" 1/4	Ex59346	M40x1,5	11,0	81	60	40,0	52	54	45	A	21,0 - 24,0				
																	B	24,0 - 27,0	1			
																	C	27,0 - 30,0				
																	D	30,0 - 33,0				
A7	Ex59426	NPT 1" 1/2	Ex59326	R 1" 1/2	21,0	Ex59446	GAS 1" 1/2	Ex59347	M50x1,5	14,0	86	69	50,0	60	62	55	A	27,0 - 30,0				
																	B	30,0 - 33,0	1			
																	C	33,0 - 36,0				
																	A	36,0 - 39,0				
A8	Ex59427	NPT 2"	Ex59327	R 2"	23,0	Ex59447	GAS 2"	Ex59348	M63x1,5	14,0	105	89	63,5	75	80	68	B	39,0 - 42,0	1			
																	C	42,0 - 45,0				
																	D	46,5 - 49,5				

Dettagli pressacavi / Cable glands details

Tipo di certificazioni Certification type	Organismo di notifica Notification body	Gruppo di dispositivi Device Group	ATEX Categorie ATEX Category	Esecuzioni Execution	EPL	Grado IP IP Rating	Norme di riferimento Reference norms	Tipo di cavo Cable type	Zone Zona	Disponibile ingresso filetto Available thread entry	Temperatura di esercizio Operating temperature
IECEx		-		Ex eb IIC	Gb	IP66 / IP67 IP68 (0.5bar, 30 min)	IEC 60079-0, IEC 60079-7, IEC 60079-15, IEC 60079-31	Non armato Non armoured	1 zone 2 zone	ISO 965-1, GAS ISO 228, ISO 7/1, NPT ANSI/ASME B1.20.1	-35°C +85°C
				Ex nR IIC	Gc						
				Ex tb IIIC	Db	IP 6X 20 mbar					
Ex	0051	II	2G	Ex eb IIC	Gb	P66 / IP67 IP68 (0.5bar, 30 min)	EN IEC 60079-0, EN IEC 60079-7, EN IEC 60079-15, EN IEC 60079-31		21 zone 22 zone		
				Ex nR IIC	Gc						
				Ex tb IIIC	Db	IP 6X 20 mbar					

Esempio di marcatura pressacavo Ex / Example of Ex cable gland marking

IECEx IMQ 24.0004X IMQ 24 ATEX 012 X (eb,tb) IMQ 24 ATEX 013 X (nR) INR TPM-N A2 Ex59342AEM M16x1.5

CE Ex 0051 II 2GD Ex eb IIC Gb Ex tb IIIC Db | II 3G Ex nR IIC Gc -35/+85 °C IP66/68

Informazioni dettagliate sulla marcatura vedere il numero di pagina 10. / Detail information regarding marking see page number 10

Ex Apparecchiatura

Ex Equipment



Dettagli di costruzione / Construction Details:

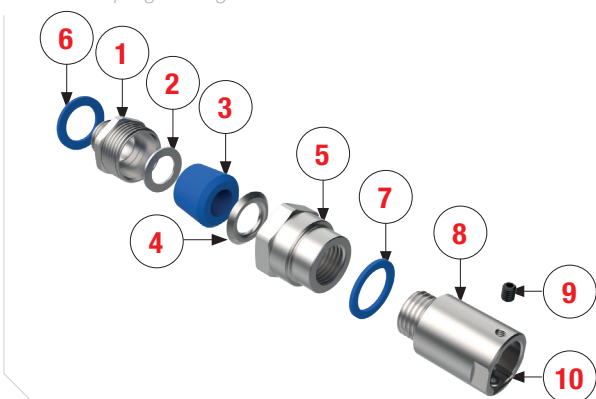
N°	Nome / Part Name	Materiale / Material
1	Corpo / Body	Ottone nichelato / Brass nickel plated
2	Rondella di uscita / End washer *	Ottone nichelato / Brass nickel plated
3	Gommino di tenuta / Sealing rubber	EPDM
4	Rondella d'ingresso / Entry washer	Ottone nichelato / Brass nickel plated
5	Testina filettata / Threaded head	Ottone nichelato / Brass nickel plated
6	Guarnizione piatta IP / IP Flat gasket **	TPM

N°	Nome / Part Name	Materiale / Material
7	Guarnizione piatta IP / IP Flat gasket	TPM
8	Raccordo ad innesto rapido Quick coupling fitting	Ottone nichelato / Brass nickel plated
9	Vite di blocco / Lock Screw	Acciaio INOX 316L / Stainless steel 316L
10	Molla autobloccante / Self block spring	Acciaio INOX AISI 304 Stainless Steel AISI 304
11	Morsetto EMC / EMC clasper	Ottone / Brass

* Le seguenti voci della filettatura non richiedono la rondella di uscita in base alla costruzione
Following thread entries does not require end washer based on construction
SIZE ID (A7): NPT 1"1/2, R 1"1/2, GAS 1"1/2, M50x1.5
SIZE ID (A8): NPT 2", R 2", GAS 2", M63x1.5

** Solo per filettatura cilindrica / Only for cylindrical thread

Raccordo innesto rapido pressacavo per tubo rigido maschio fisso per cavo non armato
Quick coupling cable gland for non-armoured cable with fixed male thread for rigid pipe



ESEMPIO D'ORDINE / EXAMPLE ORDERING

Product code
Codice prodotto

Ex59342

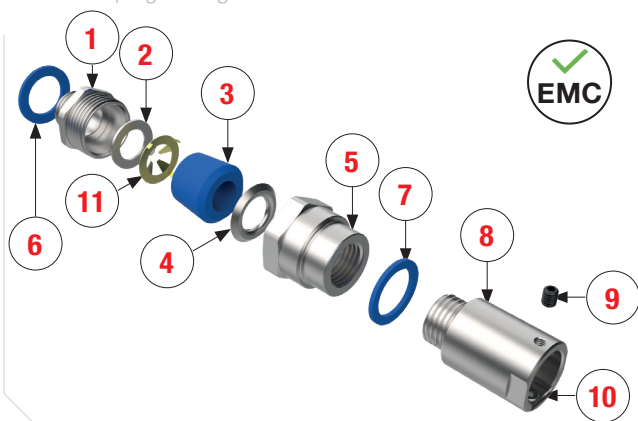
A

A / B / C / D = Select one sealing rubber
Selezionare una gommino di tenuta

Codice d'ordinazione
Ordering code

Ex59342A

Raccordo innesto rapido pressacavo per tubo rigido maschio fisso per cavo non armato con compatibilità EMC
Quick coupling cable gland for non-armoured cable with fixed male thread for rigid pipe with EMC compatibility



ESEMPIO D'ORDINE / EXAMPLE ORDERING

Product code
Codice prodotto

Ex59342

A

EM

EM = EMC for non-armoured cable glands
EMC per pressacavi non armati

A / B / C / D = Select one sealing rubber
Selezionare una gommino di tenuta

Codice d'ordinazione
Ordering code

Ex59342AEM

Controdado / Locknut						
Codice Code	Filetto Thread GAS ISO 228	Codice Code	Filetto Thread Metrico ISO 965-1	S (mm) Spessore Thread	Esagono Hexagon	Conf. Pack. N° Pz
60302	GAS 3/8"	60321	M16 x 1,5	4	21	100
60303	GAS 1/2"	60322	M20 x 1,5	4	25	100
60304	GAS 3/4"	60323	M25 x 1,5	4	30	50
60305	GAS 1"	60324	M32 x 1,5	5	37	50
60306	GAS 1"1/4	60325	M40 x 1,5	5	45	25
-	-	60326	M50 x 1,5	6	55	25
60307	GAS 1"1/2	-	-	5	52	25
60308	GAS 2"	-	-	6	65	10
-	-	60327	M63 x 1,5	6	69	10

Gommino di tenuta / Sealing rubber								
SIZE ID	Codice Code	Cavi Cables	Conf. Pack. N° Pz	SIZE ID	Codice Code	Cavi Cables	Conf. Pack. N° Pz	
A2	Ex34202	A	5,0 - 7,0	A6	Ex34306	A	21,0 - 24,0	5
	Ex34102	B	7,0 - 9,0		Ex34106	B	24,0 - 27,0	
	Ex34002	C	9,5 - 11,5		Ex34206	C	27,0 - 30,0	
	-	-	-		Ex34006	D	30,0 - 33,0	
A3	Ex34203	A	5,5 - 8,0	A7	Ex34207	A	27,0 - 30,0	5
	Ex34103	B	8,0 - 10,5		Ex34107	B	30,0 - 33,0	
	Ex34003	C	10,5 - 13,0		Ex34007	C	33,0 - 36,0	
A4	Ex34204	A	10,5 - 13,0	A8	Ex34208	A	36,0 - 39,0	5
	Ex34104	B	13,0 - 15,5		Ex34108	B	39,0 - 42,0	
	Ex34004	C	15,5 - 18,0		Ex34308	C	42,0 - 45,0	
A5	Ex34205	A	15,5 - 18,0	-	-	-	-	-
	Ex34105	B	18,0 - 20,5	-	-	-	-	-
	Ex34005	C	20,5 - 23,0	-	-	-	-	-

Pressacavo tipo / Cable glands type

