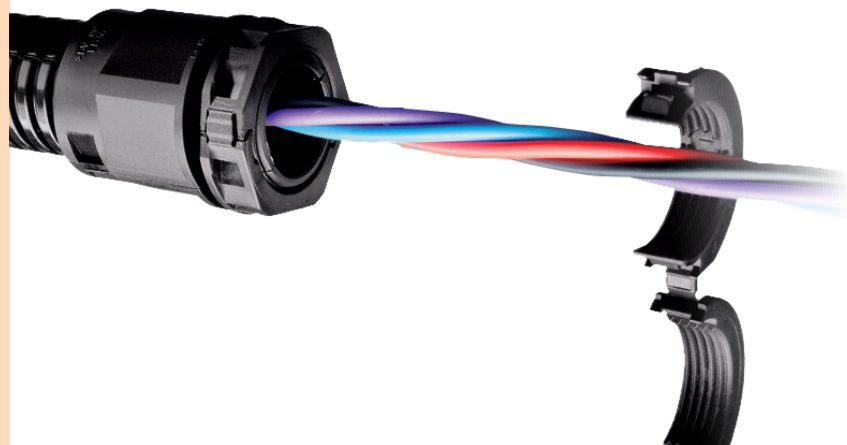
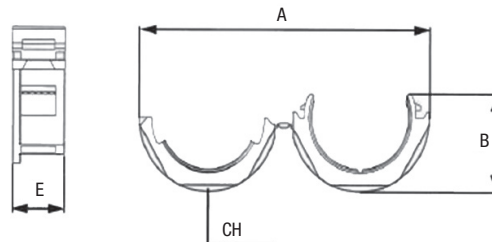


Controdadi serie 2P

Locknuts 2P series



disegno dimensionale / reference details



Settori di Impiego / Areas of application



Caratteristiche / Characteristics:

I controdadi apribili 2P sono adatti per attività di retrofit per assicurare i raccordi montati su guaine dove i cavi sono già installati. I controdadi sono realizzati in poliammide 6 (PA6) dalla speciale formulazione e possono essere chiusi saldamente e permanentemente. Si adattano specialmente ai raccordi apribili 2P utilizzati con le guaine apribili.

2P series divisible locknuts are suitable for retrofit applications in order to firmly tight threaded fittings applied to conduits where wires and cables are already installed. The locknuts are made of specially formulated Polyamide (PA6) and can be securely closed and permanently tightened. They specially fit with the divisible 2P fittings used with divisible conduits.

| FIP SPLIT® | Codice Code | Ø Tubo Nominale NW Pipe Nominal Ø NW | Filetto Thread ISO R68 | Misure in mm Dimension in mm | | | | | Confezione Package |
|--------------------|-------------|---|---------------------------|---------------------------------|------|------|---|------|--------------------|
| | | mm | F | A | B | CH | D | E | N° Pz |
| 2-NTPA-M SERIES | P69016 | 10 | M 16 | 44,5 | 14,2 | 19,0 | - | 8,0 | 10 |
| | P69020 | 14 | M 20 | 61,5 | 20,6 | 27,0 | - | 8,0 | 10 |
| | P69025 | 20 | M 25 | 73,8 | 22,9 | 32,0 | - | 9,0 | 10 |
| | P69032 | 23 | M 32 | 92,0 | 29,1 | 40,0 | - | 12,0 | 10 |
| | P69040 | 37 | M 40 | 111,3 | 35,3 | 48,0 | - | 15,0 | 10 |
| | P69050 | 45 | M 50 | 143,8 | 45,8 | 64,0 | - | 15,0 | 10 |

| FIP SPLIT® | Codice Code | Ø Tubo Nominale NW Pipe Nominal Ø NW | Filetto Thread PG DIN 40430 | Misure in mm Dimension in mm | | | | | Confezione Package |
|---------------------|-------------|---|--------------------------------|---------------------------------|---|------|---|------|--------------------|
| | | mm | F | A | B | CH | D | E | N° Pz |
| 2-NTPA-PG SERIES | P69109 | 10 | PG 09 | - | - | 22,0 | - | 12,0 | 10 |
| | P69113 | 14 | PG 13.5 | - | - | 30,0 | - | 14,0 | 10 |
| | P69121 | 20 | PG 21 | - | - | 36,0 | - | 14,0 | 10 |
| | P69129 | 23 | PG 29 | - | - | 46,0 | - | 17,0 | 10 |
| | P69229 | 37 | PG 29 | - | - | 55,0 | - | 17,0 | 10 |

Colore standard NERO. Per ordinare il GRIGIO aggiungere G al codice articolo.
Standard color BLACK. To order GREY colour, add G to the item code.