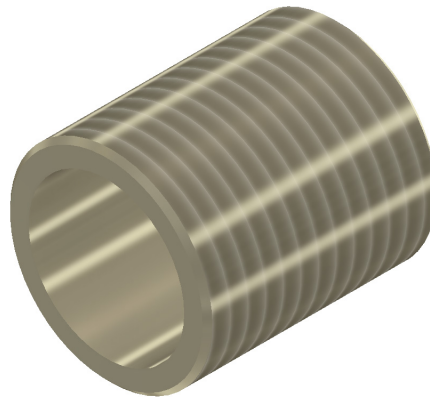


## Nipplo Nipple



### Settori di Impiego / Areas of application



### DESCRIZIONE / DESCRIPTION

Nipplo realizzato in ottone nichelato con filettatura GAS e metrico.

*Nipples manufactured in nickel-plated brass with GAS and metric thread.*

### DATI TECNICI / TECHNICAL DATA

<b>Materiale / Material</b>	Ottone Nichelato / Nickel-plated Brass
-----------------------------	----------------------------------------

Codice Code	Filetto GAS ISO 228 GAS ISO 228 Thread	Confezione (PZ) Package (PCS)
60751	1/4"	25
60752	3/4"	25
60753	1/2"	10
60754	3/4"	10
60755	1"	10
60756	1" 1/4	1
60757	1" 1/2	1
60758	2"	1

Codice Code	Filetto ISO METRICO ISO METRIC Thread
60781*	M16*1,5
60782*	M20*1,5
60783*	M25*1,5
60784*	M32*1,5
60785*	M40*1,5
60786*	M50*1,5

\* Consegna in 20 giorni lavorativi su quantità minima / Delivery in 20 working days on minimum quantity