

Gommino di tenuta e Gommino di entrata  
Sealing rubber & Entry rubber



Temperatura di esercizio  
Operating temperature

-35°C

+85°C

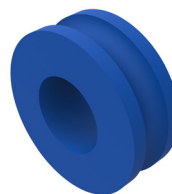
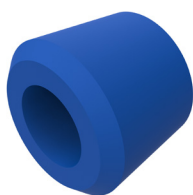


Settori di Impiego / Areas of application



Caratteristiche tecniche / technical characteristics

Nome / Part Name	technical characteristics
Material / materiale	EPDM
Intervallo di temperatura di servizio / Service temperature range	-35°C / +85°C
Grado di protezione IP / IP rating	IP66 / IP68 (0,5 Bar, 30min)
Certificazione / Certification	IECEx / ATEX



Gommino di tenuta / Sealing rubber

SIZE ID	Codice Code		Cavi Cables	Conf. Pack.
			ø Min-Max	N° Pz
A2	Ex34202	A	5,0 - 7,0	10
	Ex34102	B	7,0 - 9,0	
	Ex34002	C	9,5 - 11,5	
A3	Ex34203	A	5,5 - 8,0	10
	Ex34103	B	8,0 - 10,5	
	Ex34003	C	10,5 - 13,0	
A4	Ex34204	A	10,5 - 13,0	8
	Ex34104	B	13,0 - 15,5	
	Ex34004	C	15,5 - 18,0	
A5	Ex34205	A	15,5 - 18,0	8
	Ex34105	B	18,0 - 20,5	
	Ex34005	C	20,5 - 23,0	
A6	Ex34306	A	21,0 - 24,0	5
	Ex34106	B	24,0 - 27,0	
	Ex34206	C	27,0 - 30,0	
	Ex34006	D	30,0 - 33,0	
A7	Ex34207	A	27,0 - 30,0	5
	Ex34107	B	30,0 - 33,0	
	Ex34007	C	33,0 - 36,0	
A8	Ex34208	A	36,0 - 39,0	5
	Ex34108	B	39,0 - 42,0	
	Ex34308	C	42,0 - 45,0	
	Ex34008	D*	46,5 - 49,5	

Gommino di entrata / Entry rubber

SIZE ID	Codice Code		Cavo estremo Outer cable	Conf. Pack.
			ø Min-Max	N° Pz
A2	36001	W	8,0 - 10,5	10
	36101	Y	10,5 - 13,0	
A3	36102	W	9,0 - 12,0	10
	36003	Y	12,0 - 15,0	
	36103	Z	15,0 - 18,0	
A4	36204	W	15,0 - 18,0	8
	36004	Y	18,0 - 21,0	
	36104	Z	21,0 - 24,0	
A5	36005	W	21,0 - 24,5	8
	36105	Y	24,5 - 28,0	
	36205	Z	28,0 - 31,5	
A6	36006	W	30,0 - 34,0	5
	36106	Y	34,0 - 38,0	
	36206	Z	38,0 - 42,0	
A7	36007	W	33,0 - 37,0	5
	36107	Y	37,0 - 41,0	
	36207	Z	41,0 - 45,0	
A8	36008	W	42,0 - 46,0	5
	36108	Y	46,0 - 50,0	
	36208	Z	50,0 - 54,0	

\* Solo per pressacavi non armati / Only for non-armoured cable glands