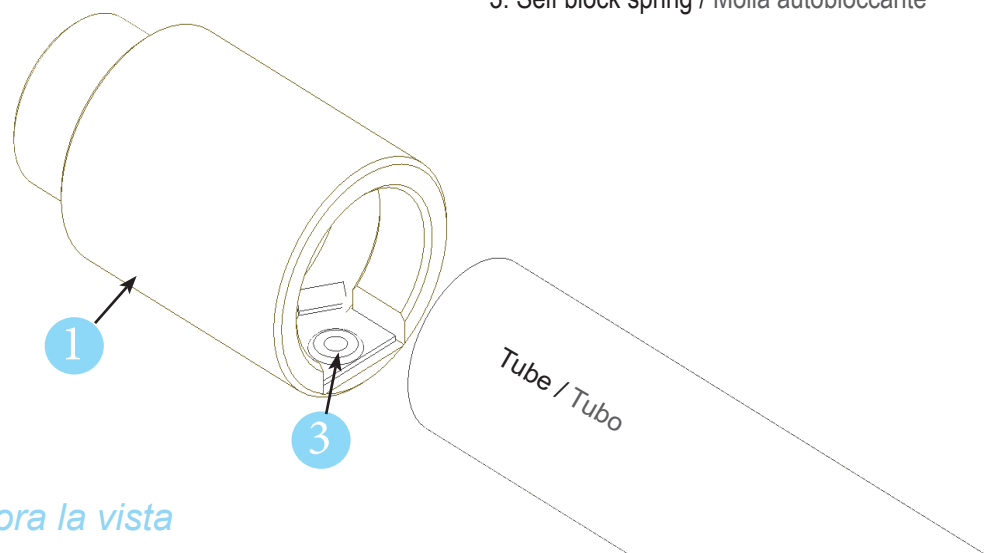
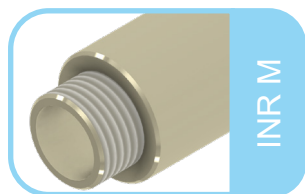


1. Quick coupling Body / Corpo ad innesto rapido
2. Lock screw / Vite di blocco
3. Self block spring / Molla autobloccante

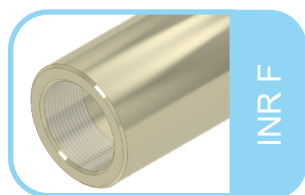


Explore view / Esplora la vista

Different type of cable gland body with thread entry Differenti tipi di corpi pressacavi

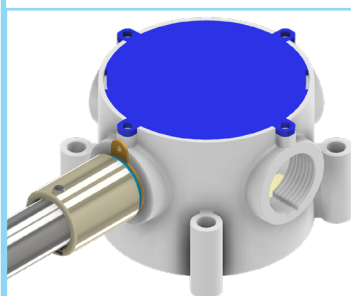


Quick coupling with fixed male thread for rigid pipe
Raccordo innesto rapido per tubo rigido maschio fisso

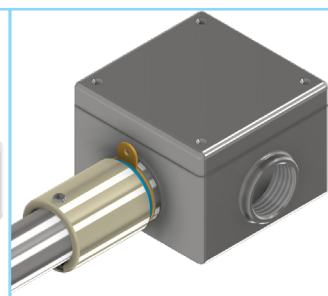


Quick coupling with fixed female thread for rigid pipe
Raccordo innesto rapido per tubo rigido femmina fisso

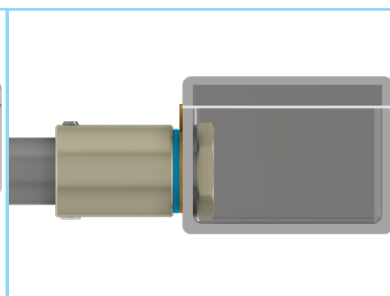
Application of use the quick coupling fitting/ Applicazione di utilizzo dei raccordo innesto rapido



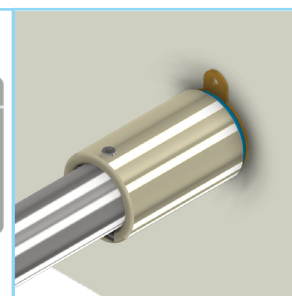
Plastic junction box /
Scatola di giunzione in
plastica



Threaded junction box /
Scatola di giunzione
filettata



Junction box with Lock nut /
Scatola di giunzione con con-
trodado



Wall /
Parete

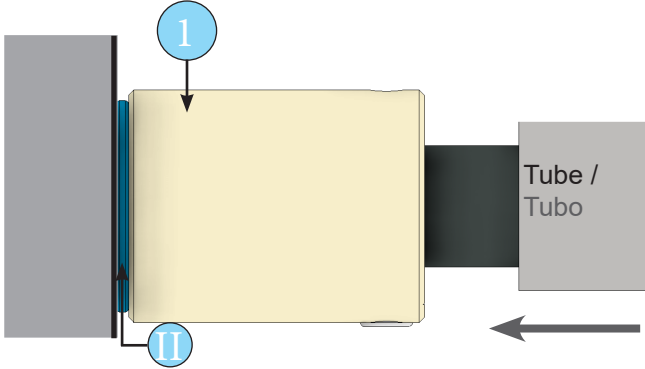
For more information about junction box assembly, visit our website: www.euro2000-spa.it
Per ulteriori informazioni sull'assemblaggio della scatola di giunzione, visitare il nostro website: www.euro2000-spa.it

Thread version of enclosure or passing wall / Filettatura cilindrica o pareti passanti (step1A, step2A)
 Junction box / cassette di derivazione (step1B, step2B)

(I) Locknut / Controdado, (II) IP gasket / Guarnizione IP

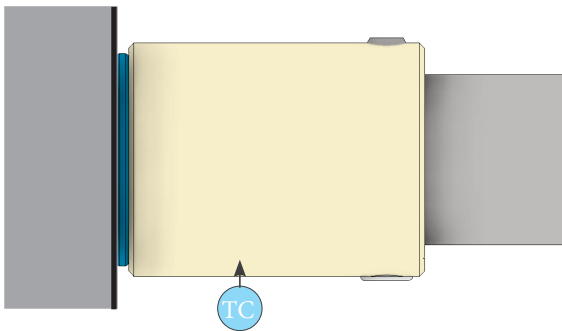
Step 1A

Tight the entry thread to the threaded enclosure or passing wall. Insert the pipe into quick coupling (1). / Serrare la filettatura di ingresso alla custodia filettata o al muro passante. Inserire il tubo nell'attacco rapido (1).



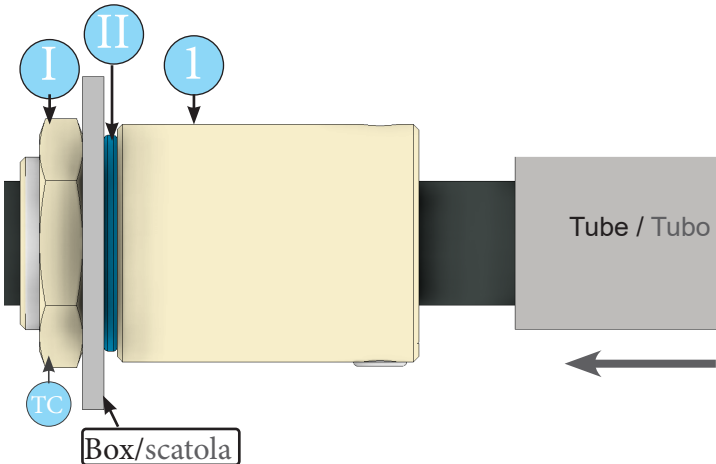
Step 2A

Assembled thread version of enclosure or passing wall
 Versione filettata assemblata di custodia o parete passante.

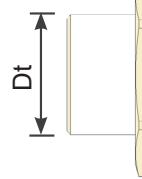


Step 1B

Tight the entry thread between junction box and locknut. Insert pipe into quick coupling (1).
 Serrare il filetto tra la custodia e il controdado. Inserire il tubo nell'innesto rapido (1).



Torque value for thread entry (TC)		
Valore di coppia per ingresso filettatura (TC)		
Metric	Dt	TC
ISO 965-1	mm	Nm
M12x1.5	12	5
M16x1.5	16	5
M20x1.5	20	5.5
M25x1.5	25	6.5
M32x1.5	32	9
M40x1.5	40	13
M50x1.5	50	15
M63x1.5	63	27.5



Step 2B

Assembled junction box
 Scatola di derivazione assemblata

