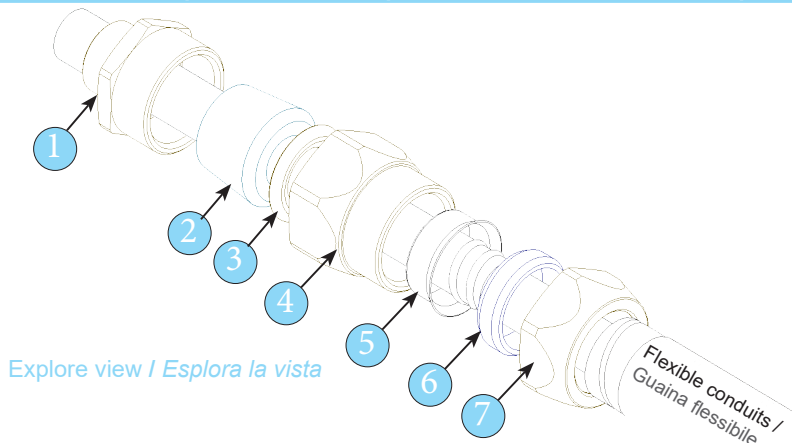


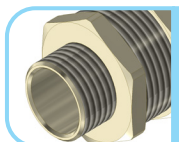
Fitting cable gland for non-armoured cable for flexible conduits  
Raccordo pressacavo per cavo non armato per guaina flessibile



1. Body / Corpo
2. Sealing Rubber / Gommino di tenuta
3. Entry washer / Rondella d'ingresso
4. Silok body / Corpo Silok
5. Ring / Anello
6. Ferrule / Virola
7. Nut / Dado

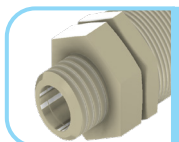
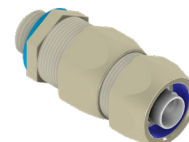
Explore view / Esplora la vista

### Different type of fitting cable gland body with thread entry Differenti tipi di corpi per raccordo pressacavi



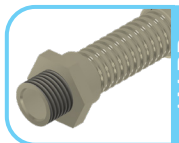
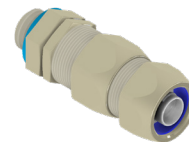
AM RP MF

Fitting cable gland for non-armoured cable with fixed male thread  
Raccordo pressacavo per cavo non armato con filetto maschio fisso



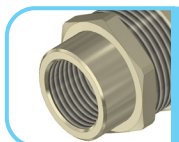
AM RP MG

Fitting cable gland for non-armoured cable with swivel male thread  
Raccordo pressacavo per cavo non armato con filetto maschio girevole



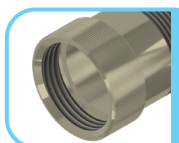
AM RP curvo

Variable angle fitting cable gland for non-armoured cable with male thread  
Raccordo pressacavo ad angolo variabile per cavo non armato con filetto maschio fisso



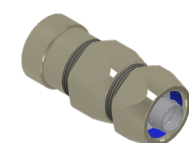
AM RP FF

Fitting cable gland for non-armoured cable with fixed female thread  
Raccordo pressacavo per cavo non armato con filetto femmina fisso

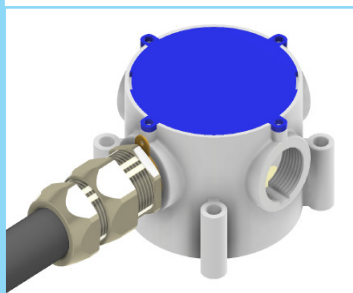


AM RP RC

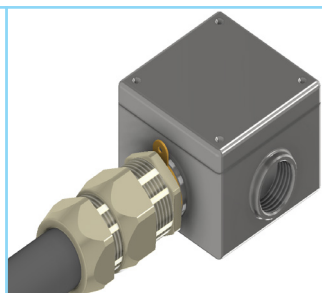
Fitting cable gland for non-armoured cable with fixed UN(UNEF-UNS) female thread  
Raccordo pressacavo per cavo non armato con filetto femmina fisso UN(UNEF-UNS)



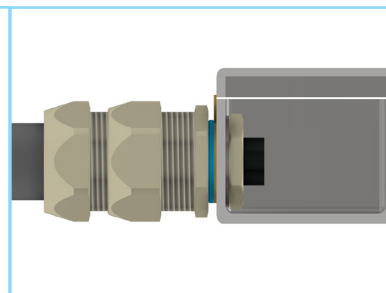
### Application of use the fitting cable glands/ Applicazione di utilizzo dei raccordi pressacavi



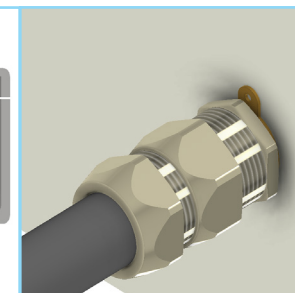
Plastic junction box /  
Scatola di giunzione in  
plastica



Threaded junction box /  
Scatola di giunzione  
filettata



Junction box with Lock nut /  
Scatola di giunzione con con-  
troddado



Wall /  
Parete

For more information about junction box assembly, visit our website: [www.euro2000-spa.it](http://www.euro2000-spa.it)

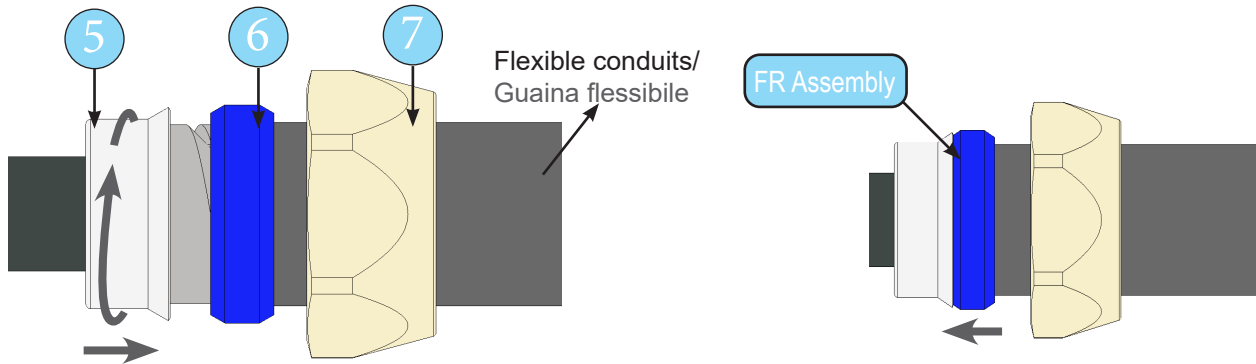
Per ulteriori informazioni sull'assemblaggio della scatola di giunzione, visitare il nostro website: [www.euro2000-spa.it](http://www.euro2000-spa.it)

Thread version of enclosure or passing wall / Filettatura cilindrica o pareti passanti (step1, step2, step3A, step 4A)  
 Junction box / cassette di derivazione (step1, step2, step3B, step 4B)

(I) Locknut / Controdado, (II) IP gasket / Guarnizione IP

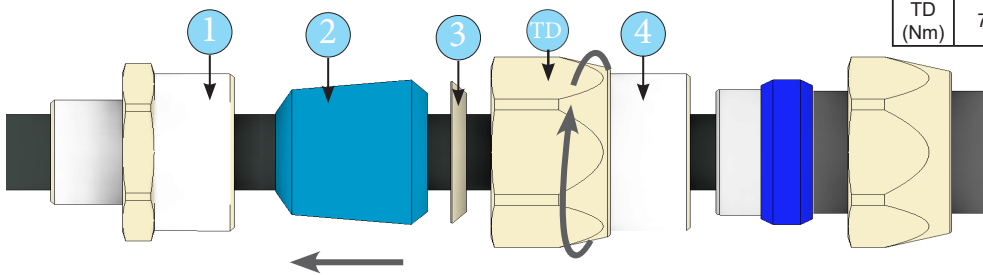
### Step 1

Insert the parts (7,6) inside the flexible conduit and screw the ferrule (5). Move the ring towards the ferrule.  
 Inserire le parti (7,6) all'interno della guaina flessibile e avvitare la Virola (5). Spostare l'anello verso la Virola.



### Step 2

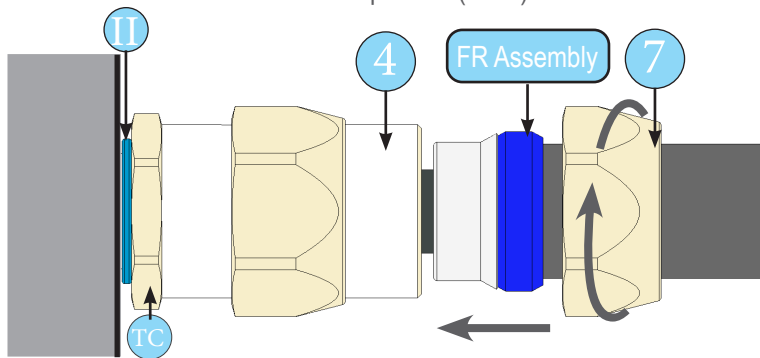
Insert parts (4,3,2,1) inside the cable and hand tighten between body and and silok body (1 and 4)  
 Inserire i componenti (4,3,2,1) all'interno del cavo e serrare a mano il corpo al il corpo silok (1 e 4)



Recommended tightening torque value (TD)		Valore di coppia di serraggio consigliato (TD)							
CH D		22	26	29	35	44	54	62	80
TD (Nm)		7	11	13	13	18	35	40	45

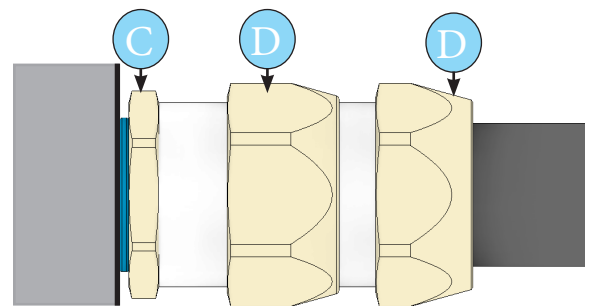
### Step 3A

To tight the entry to the thread enclosure or passing wall and tight between nut and silok body (4 and 7).  
 Serrare l'ingresso alla custodia filettata o parete passante e serrare il dado al corpo silok (4 e 7).



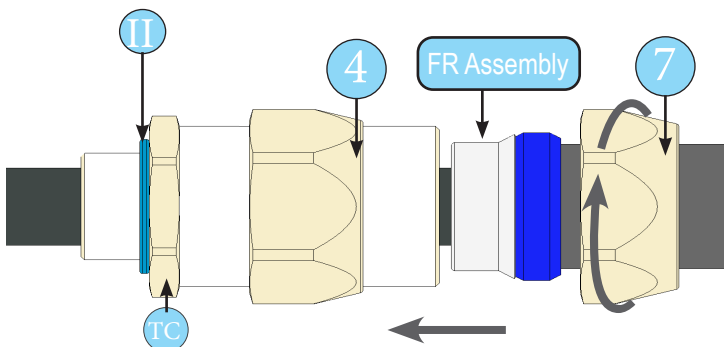
### Step 4A

Retighten the final system / Serrare il sistema finale



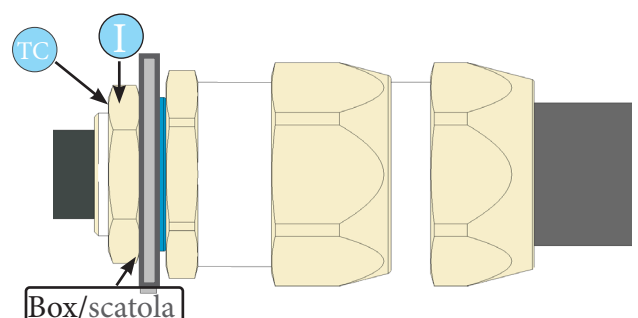
### Step 3B

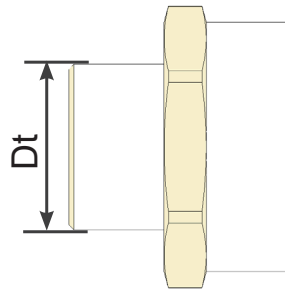
Hand tighten between nut and silok body (4 and 7).  
 Serrare a mano il dado al corpo silok (4 e 7).



### Step 4B

Tight the entry thread between junction box and locknut and retighten the final system / Serrare il filetto tra la custodia e il controdado e serrare il sistema finale.





TIGHTENING TORQUE VALUE OF THE THREAD ENTRY FOR CABLE GLAND - TC VALORE DI COPPIA DI SERRAGGIO DELL'INGRESSO FILETTO PER PRESSACAVO - TC												
Torque value for taper type thread entry		Torque value for cylindrical type thread entry										
Valore di coppia per l'ingresso del filetto maschio di tipo conico		Valore di coppia per ingresso filettatura di tipo cilindrico										
NPT	ISO GAS	Metric	Dt	TC	GAS	Dt	TC	PG	Dt	TC	UN	TC
ASME B1.20.1	ISO 7/1	ISO 965-1	mm	Nm	ISO 228	mm	Nm	DIN 40430	mm	Nm	ANSI/ASME B1.1	Nm
NPT 1/4"	R/Rc 1/4"	M12x1.5	12	5	1/4"	13.1	4	PG 7	12.5	4.5	3/4" - 20 UNEF	4.5
NPT 3/8"	R/Rc 3/8"	M16x1.5	16	5	3/8"	16.6	5	PG 9	15.2	5	7/8" - 20 UNEF	5
NPT 1/2"	R/Rc 1/2"	M20x1.5	20	5.5	1/2"	20.9	5	PG 11	18.6	5	1" - 20 UNEF	5
NPT 3/4"	R/Rc 3/4"	M25x1.5	25	6.5	3/4"	26.4	5	PG 13.5	20.4	5.5	1" 1/8 - 18 UNEF	5.5
NPT 1"	R/Rc 1"	M32x1.5	32	9	1"	33.2	9	PG 16	22.5	5.5	1" 1/4 - 18 UNEF	6
NPT 1x1/4"	R/Rc 1x1/4"	M40x1.5	40	13	1x1/4"	41.9	12	PG 21	28.3	7.5	1" 3/8 - 18 UNEF	9
NPT 1x1/2"	R/Rc 1x1/2"	M50x1.5	50	15	1x1/2"	47.8	15	PG 29	37	9	1" 5/8 - 18 UNEF	12
NPT 2"	R/Rc 2"	M63x1.5	63	27.5	2"	59.6	20	PG 36	47	12	1" 7/8 - 16 UN	13
-	-	-	-	-	-	-	-	PG 42	54	15	2" 1/16 - 16 UNS	14
-	-	-	-	-	-	-	-	PG 48	59.3	27.5	2" 5/16 - 16 UNS	18

Note: TC - For the NPT and ISO GAS 7/1 taper thread entries are tight up to the wrenching torque.  
 Note: TC - Per NPT e ISO GAS 7/1 gli ingressi con filettatura conica sono serrati fino alla coppia di serraggio.