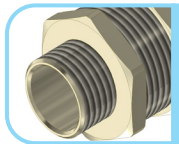


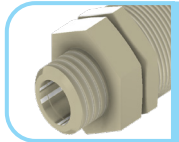
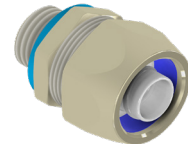
1. Body / Corpo
2. Ring / Anello
3. Ferrule / Virola
4. Nut / Dado

Explore view / Esplora la vista

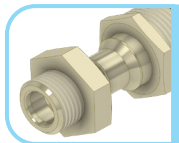
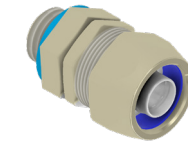
#### Different type of fitting body with thread entry Differenti tipi di corpi per raccordi



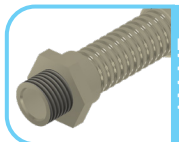
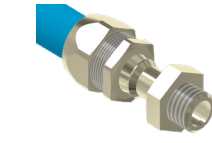
**AM MF**  
Fitting with fixed male thread  
Raccordo con filetto maschio fisso



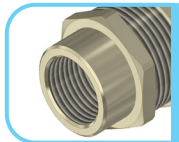
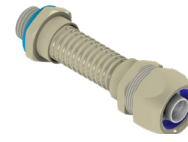
**AM MG**  
Fitting with swivel male thread  
Raccordo con filetto maschio girevole



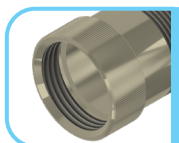
**AM MG JOLLY**  
Fitting with swivel JOLLY male thread  
Raccordo con filetto maschio girevole JOLLY



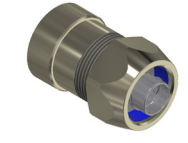
**AM MF curvo**  
Variable angle fitting with male thread  
Raccordo ad angolo variabile con filetto maschio fisso



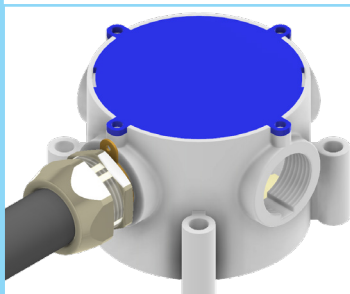
**AM FF**  
Fitting with fixed female thread  
Raccordo con filetto femmina fisso



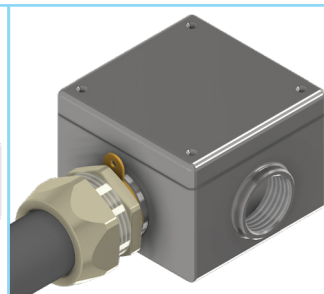
**AM RC**  
Fitting with fixed UN(UNEF-UNS) female thread  
Raccordo con filetto femmina fisso UN(UNEF-UNS)



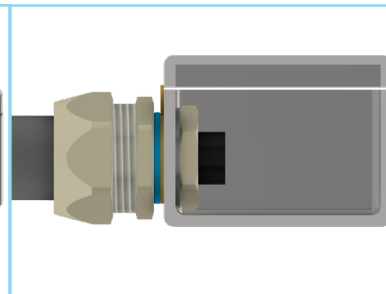
#### Application of use the fittings/ Applicazione di utilizzo dei raccordi



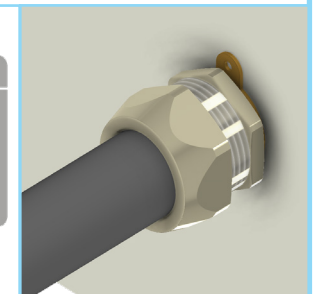
Plastic junction box /  
Scatola di giunzione in  
plastica



Threaded junction box /  
Scatola di giunzione  
filettata



Junction box with Lock nut /  
Scatola di giunzione con con-  
trodado



Wall /  
Parete

For more information about junction box assembly, visit our website: [www.euro2000-spa.it](http://www.euro2000-spa.it)

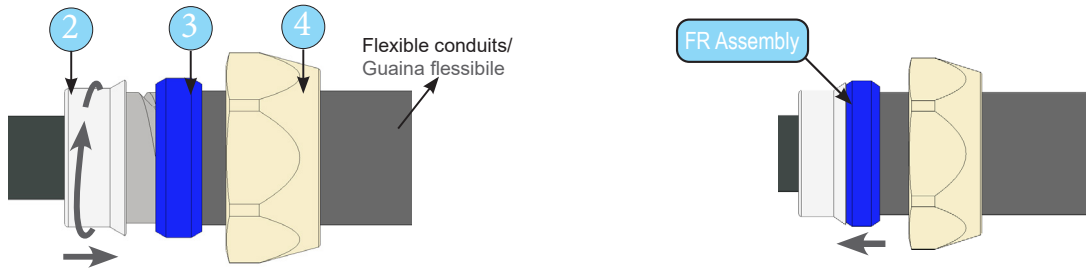
Per ulteriori informazioni sull'assemblaggio della scatola di giunzione, visitare il nostro website: [www.euro2000-spa.it](http://www.euro2000-spa.it)

Thread version of enclosure or passing wall / Filettatura cilindrica o pareti passanti (step1, step2, step3A)  
Junction box / cassette di derivazione (step1, step2, step3B)

(I) Locknut / Controdado, (II) IP gasket / Guarnizione IP

### Step 1

Insert the parts (4,3) inside the flexible conduit and screw the ferrule (2). Move the ring towards the ferrule.  
Inserire le parti (4,3) all'interno della guaina flessibile e avvitare la Virola (2). Spostare l'anello verso la Virola.



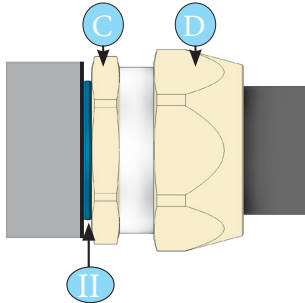
### Step 2

Insert part (1) inside the cable and hand tighten between body and nut (1 and 4)  
Inserire il componente (1) all'interno del cavo e serrare a mano il corpo al il dado (1 e4)



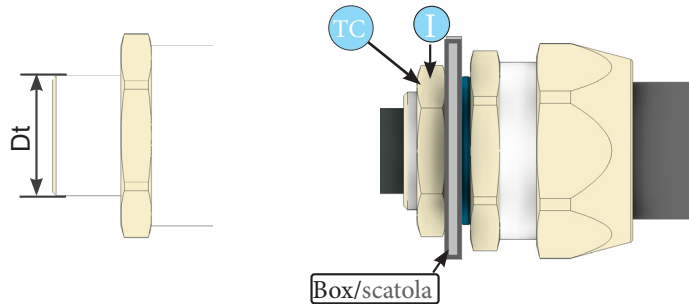
### Step 3A

To tight the entry to the thread enclosure or passing wall. Retighten the final system.  
Serrare l'ingresso alla custodia filettata. Serrare il sistema finale.



### Step 3B

Tight the entry thread between junction box and locknut and retighten the final system.  
Serrare il filetto tra la custodia e il controdado e serrare il sistema finale.



## TIGHTENING TORQUE VALUE OF THE THREAD ENTRY FOR FITTINGS - TC VALORE DI COPPIA DI SERRAGGIO DELL'INGRESSO FILETTO PER RACCORDO - TC

Torque value for taper type thread entry		Torque value for cylindrical type thread entry										
Valore di coppia per l'ingresso del filetto maschio di tipo conico		Valore di coppia per ingresso filettatura di tipo cilindrico										
NPT	ISO GAS	Metric	Dt	TC	GAS	Dt	TC	PG	Dt	TC	UN	TC
ASME B1.20.1	ISO 7/1	ISO 965-1	mm	Nm	ISO 228	mm	Nm	DIN 40430	mm	Nm	ASME B1.1	Nm
NPT 1/4"	R/Rc 1/4"	M12x1.5	12	5	1/4"	13.1	4	PG 7	12.5	4.5	3/4" - 20 UNEF	4.5
NPT 3/8"	R/Rc 3/8"	M16x1.5	16	5	3/8"	16.6	5	PG 9	15.2	5	7/8" - 20 UNEF	5
NPT 1/2"	R/Rc 1/2"	M20x1.5	20	5.5	1/2"	20.9	5	PG 11	18.6	5	1" - 20 UNEF	5
NPT 3/4"	R/Rc 3/4"	M25x1.5	25	6.5	3/4"	26.4	5	PG 13.5	20.4	5.5	1" 1/8 - 18 UNEF	5.5
NPT 1"	R/Rc 1"	M32x1.5	32	9	1"	33.2	9	PG 16	22.5	5.5	1" 1/4 - 18 UNEF	6
NPT 1x1/4"	R/Rc 1x1/4"	M40x1.5	40	13	1x1/4"	41.9	12	PG 21	28.3	7.5	1" 3/8 - 18 UNEF	9
NPT 1x1/2"	R/Rc 1x1/2"	M50x1.5	50	15	1x1/2"	47.8	15	PG 29	37	9	1" 5/8 - 18 UNEF	12
NPT 2"	R/Rc 2"	M63x1.5	63	27.5	2"	59.6	20	PG 36	47	12	1" 7/8 - 16 UN	13
-	R 2x1/2"	M75x1.5	75	30	2x1/2"	75.1	30	PG 42	54	15	2" 1/16 - 16 UNS	14
-	R 3"	M90x1.5	90	35	3"	87.8	35	PG 48	59.3	27.5	2" 5/16 - 16 UNS	18
-	-	M110x1.5	110	40	4"	113	40	-	-	-	-	-

Note: TC - For the NPT and ISO GAS 7/1 taper thread entries are tight up to the wrenching torque.  
Note: TC - Per NPT e ISO GAS 7/1 gli ingressi con filettatura conica sono serrati fino alla coppia di serraggio.

