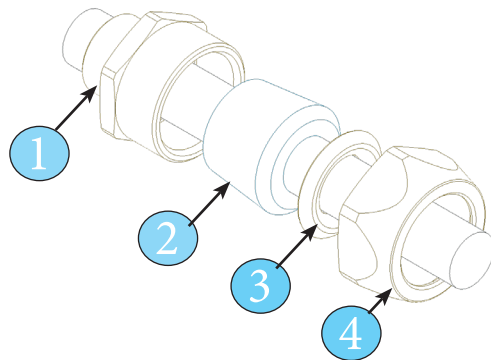


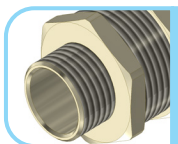
Cable gland for non-armoured cable
Pressacavo per cavo non armato



1. Body / Corpo
2. Sealing Rubber / Gommino di tenuta
3. Entry washer / Rondella d'ingresso
4. Nut / Dado

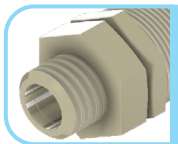
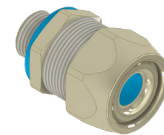
Explore view / Esplora la vista

Different type of cable gland body with thread entry Differenti tipi di corpi pressacavi



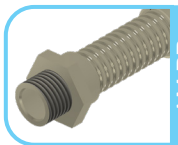
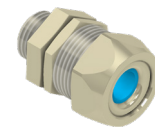
AM PRM

Cable gland for non-armoured cable with fixed male thread
Pressacavo per cavo non armato con filetto maschio fisso



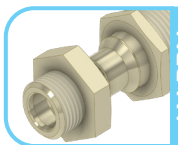
AM PRG

Cable gland for non-armoured cable with swivel male thread
Pressacavo per cavo non armato con filetto maschio girevole



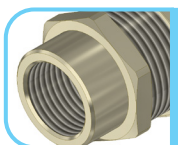
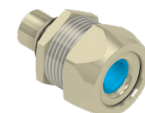
AM PR
curvo

Variable angle cable gland for non-armoured cable with male thread
Pressacavo ad angolo variabile per cavo non armato con filetto maschio fisso



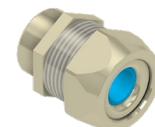
AM PRM
JOLLY

Cable gland for non-armoured cable with swivel JOLLY male thread
Pressacavo per cavo non armato con filetto maschio girevole JOLLY

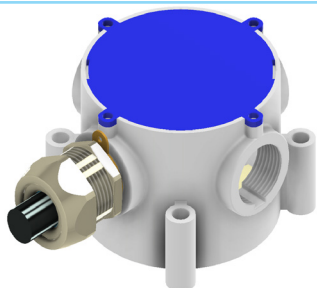


AM PRF

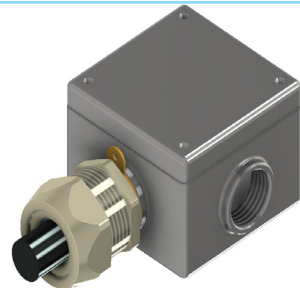
Cable gland for non-armoured cable with fixed female thread
Pressacavo per cavo non armato con filetto femmina fisso



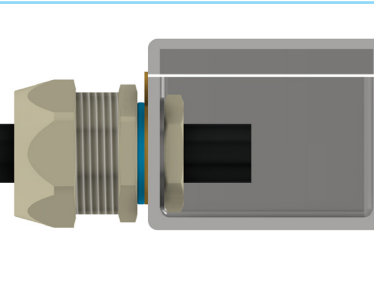
Application of use the cable glands/ Applicazione di utilizzo dei pressacavi



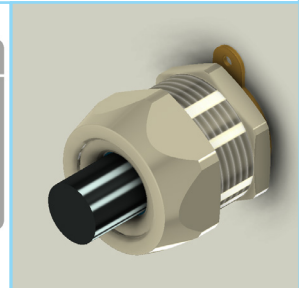
Plastic junction box /
scatola di derivazione in
plastica



Threaded junction box /
scatola di derivazione
filettata



Junction box with Lock nut /
scatola di derivazione con
controdado



Wall /
Parete

For more information about junction box assembly, visit our website: www.euro2000-spa.it

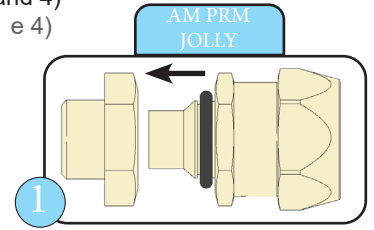
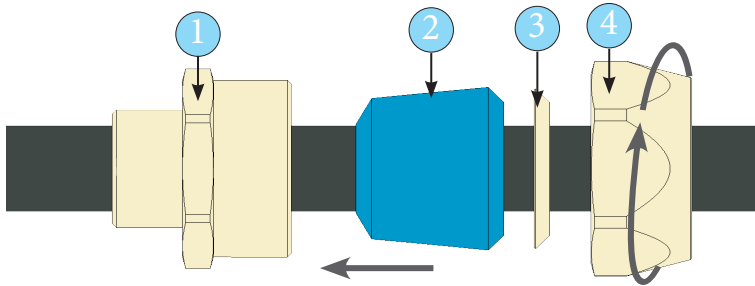
Per ulteriori informazioni sull'assemblaggio della scatola di giunzione, visitare il nostro website: www.euro2000-spa.it

Thread version of enclosure or passing wall / Filettatura cilindrica o pareti passanti (step1, step2A)
 Junction box / cassette di derivazione (step1, step2B)

(I) Locknut / Controdado, (II) IP gasket / Guarnizione IP

Step 1

Insert parts (4,3,2,1) inside the cable and hand tighten between body and nut (1 and 4)
 Inserire i componenti (4,3,2,1) all'interno del cavo e serrare a mano il corpo al dado (1 e 4)

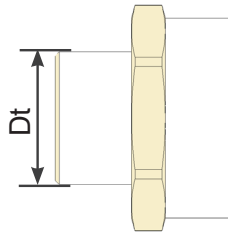
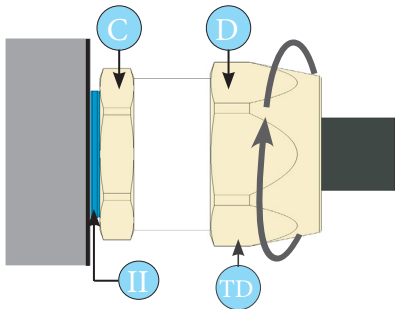


Recommended tightening torque value (TD)
 Valore di coppia di serraggio consigliato (TD)

CH D	22	26	29	35	44	54	62	80
TD (Nm)	7	11	13	13	18	35	40	45

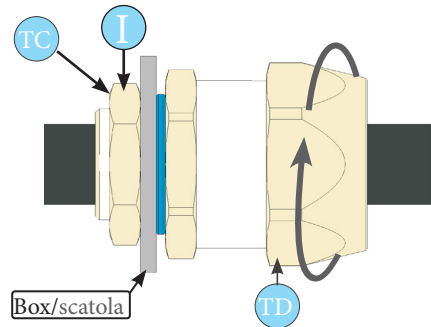
Step 2A

To tight the entry to the thread enclosure or passing wall and retighten the final system / Serrare l'ingresso al custodia filettata o parete passante e serrare il sistema finale



Step 2B

Tight the entry thread between junction box and locknut and retighten the final system / Serrare il filetto tra la custodia e il controdado e serrare il sistema finale.



TIGHTENING TORQUE VALUE OF THE THREAD ENTRY FOR CABLE GLAND - TC VALORE DI COPPIA DI SERRAGGIO DELL'INGRESSO FILETTO PER PRESSACAVO - TC

Torque value for taper type thread entry		Torque value for cylindrical type thread entry								
Valore di coppia per l'ingresso del filetto maschio di tipo conico		Valore di coppia per ingresso filettatura di tipo cilindrico								
NPT	ISO GAS	Metric	Dt	TC	GAS	Dt	TC	PG	Dt	TC
ASME B1.20.1	ISO 7/1	ISO 965-1	mm	Nm	ISO 228	mm	Nm	DIN 40430	mm	Nm
NPT 1/4"	R/Rc 1/4"	M12x1.5	12	5	1/4"	13.1	4	PG 7	12.5	4.5
NPT 3/8"	R/Rc 3/8"	M16x1.5	16	5	3/8"	16.6	5	PG 9	15.2	5
NPT 1/2"	R/Rc 1/2"	M20x1.5	20	5.5	1/2"	20.9	5	PG 11	18.6	5
NPT 3/4"	R/Rc 3/4"	M25x1.5	25	6.5	3/4"	26.4	5	PG 13.5	20.4	5.5
NPT 1"	R/Rc 1"	M32x1.5	32	9	1"	33.2	9	PG 16	22.5	5.5
NPT 1x1/4"	R/Rc 1x1/4"	M40x1.5	40	13	1x1/4"	41.9	12	PG 21	28.3	7.5
NPT 1x1/2"	R/Rc 1x1/2"	M50x1.5	50	15	1x1/2"	47.8	15	PG 29	37	9
NPT 2"	R/Rc 2"	M63x1.5	63	27.5	2"	59.6	20	PG 36	47	12
-	-	-	-	-	-	-	-	PG 42	54	15
-	-	-	-	-	-	-	-	PG 48	59.3	27.5

Note: TC - For the NPT and ISO GAS 7/1 taper thread entries are tight up to the wrenching torque.

Note: TC - Per NPT e ISO GAS 7/1 gli ingressi con filettatura conica sono serrati fino alla coppia di serraggio.

