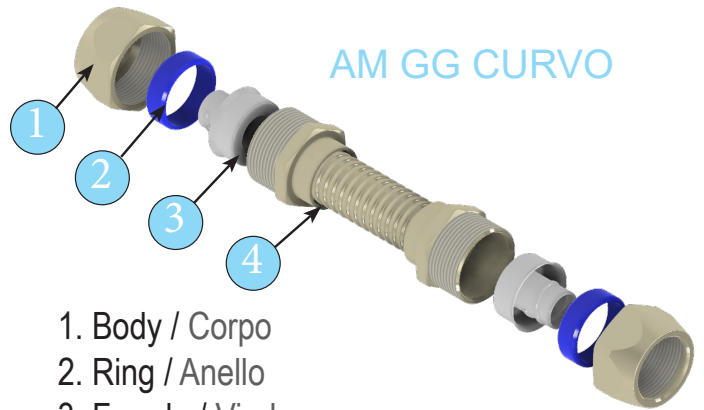


AM GG

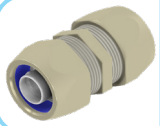


AM GG CURVO

1. Body / Corpo
2. Ring / Anello
3. Ferrule / Virola
4. Nut / Dado

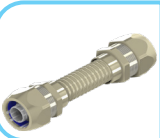
Explore view / Esplora la vista

Different type of fitting connector for flexible conduits Diverso tipo di raccordi di connettore per guaine flessibile



AM GG

Fitting connector for flexible conduits
Raccordi di connettore per guaina flessibile

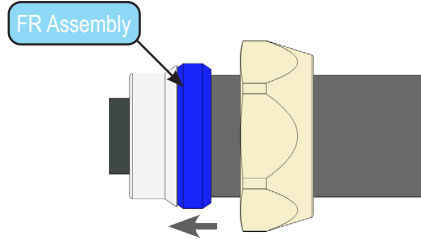
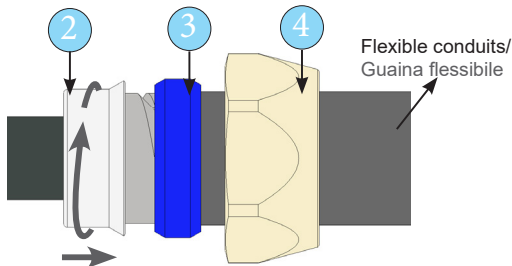


AM GG
curvo

Variable angle fitting connector for flexible conduits
Raccordi di connettore ad angolo variabile per guaina flessibile

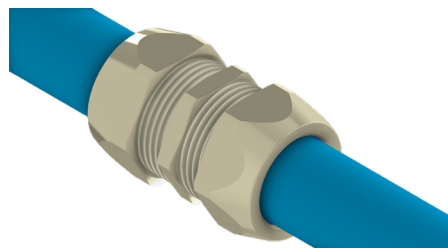
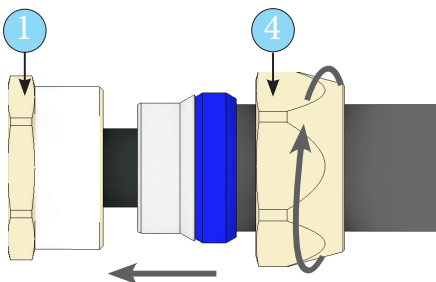
Step 1

Insert the parts (4,3) inside the flexible conduit and screw the ferrule (2). Move the ring towards the ferrule.
Inserire le parti (4,3) all'interno della guaina flessibile e avvitare la Virola (2). Spostare l'anello verso la Virola.



Step 2

Insert part (1) inside the cable and hand tighten between body and nut (1 and 4) and repeat the same procedure on the opposite side. Retighten the final system.
Inserire il componente (1) all'interno del cavo e serrare a mano il corpo al il dado (1 e 4) e ripetere la stessa procedura sul lato opposto. Serrare il sistema finale.



For more information about products, visit our website: www.euro2000-spa.it
Per ulteriori informazioni sui prodotti, visitare il nostro website: www.euro2000-spa.it